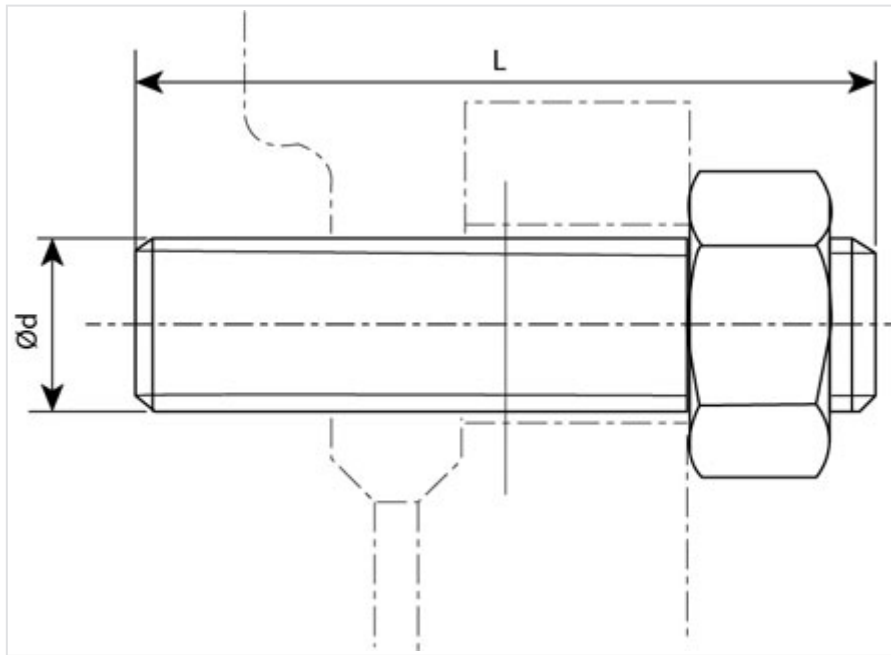


Reducing flanges - length of studs



Corresponding studs are supplied with the reducing flanges.

$\varnothing dn$ mm	PN10			PN16			PN25		
	Number	$\varnothing d$ (mm)	L (mm)	Number	$\varnothing d$ (mm)	L (mm)	Number	$\varnothing d$ (mm)	L (mm)
40	4	16	75	4	16	75	4	16	75
50	4	16	75	4	16	75	4	16	75
65	4	16	75	4	16	75	6	16	75
80	8	16	75	8	16	75	6	16	75
100	8	16	75	8	16	75	8	20	90
125	8	16	75	8	16	75	8	24	100
150	8	20	90	8	20	90	8	24	100
200	8	20	90	12	20	90	12	24	100
250	12	20	105	12	24	115	12	27	115
300	12	20	105	12	24	115	16	27	115
350	16	20	105	16	24	115	16	30	140
400	16	24	115	16	27	130	16	33	145
450	20	24	125	20	30	140	20	33	145

Ødn mm	PN10			PN16			PN25		
	Number	Ød (mm)	L (mm)	Number	Ød (mm)	L (mm)	Number	Ød (mm)	L (mm)
500	20	24	125	20	30	140	20	33	155
600	20	27	140	20	33	155	20	36	160
700	24	27	115	24	33	145	24	39	165
800	24	30	140	24	36	160	24	45	190
900	28	30	140	28	36	160	28	45	190
1000	28	33	145	28	39	165	28	52	215
1100	32	36	160	32	39	165	32	52	215
1200	32	36	160	32	45	190	32	52	215
1400	36	39	165	36	45	190	36	56	240
1500	36	39	165	36	52	215	36	56	240
1600	40	45	190	40	52	215	40	56	240
1800	44	45	190	44	52	215	-	-	-

The information on this sketch is, to the best of our knowledge correct at the time of printing. However Saint-Gobain are constantly looking at ways of improving their products and services therefore reserve the right to change without prior notice, any of the data shown. Any orders placed will be subject to our Standard Conditions of Sale, available on request.