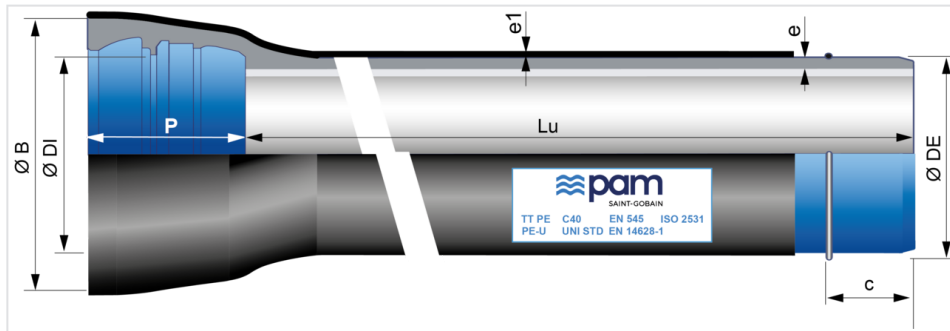


TT PE pipes DN100 to 1000 with UNIVERSAL STANDARD socket + Weld bead Ve



DN	Lu (m)	Class	e (mm)	e1 (mm)	ØDE (mm)	ØDI (mm)	P (mm)	ØB (mm)	Bead position c (mm)	Mass (kg/m)	References
100	5.97	C100	6.1	1.8	118	121.4	140	188	90	20.10	SFB10N60AG
125	5.97	C64	6.1	2	144	147.4	148	203	95	24.90	SFB12N60AG
150	5.97	C64	6.2	2	170	173.4	148	230	95	29.90	SFB15N60AG
200	5.97	C64	6.5	2	222	225.2	155	290	100	41.30	SFB20N60AG
250	5.97	C50	6.8	2	274	276.8	166	350	110	53.80	SFB25N60AG
300	5.97	C50	7.4	2.2	326	328.8	180	408	115	69.50	SFB30N60AG
350	5.97	C40	7.7	2.2	378	380.9	184	463	115	85.80	SFB35N60AG
400	5.97	C40	8.1	2.2	429	431.9	176	510	113	100.90	SFB40N60AG
450	5.97	C40	8.6	2.2	480	483	190	570	120	120.20	SFB45N60AG
500	5.97	C40	9.3	2.5	532	535	200	625	125	143.00	SFB50N60AG
600	5.97	C40	10.9	2.5	635	638.2	209	740	135	192.90	SFB60N60AG
700	6.90	C30	10.8	2.5	738	741.7	250	855	158	231.69	SFB70G70AG
800	6.90	C30	11.7	3	842	845.8	261	980	150	285.91	SFB80G70AG
900	6.90	C30	12.6	3	945	948.9	280	1087	155	347.95	SFB90G70AG
1000	6.90	C30	13.5	3	1048	1052	279.5	1191	165	402.59	SFC10G70AG

Legend:

- DN: nominal diameter
- Lu: laying length, in m
- Class: pressure class according to EN 545 and ISO 2531
- e: nominal thickness according to ISO 2531, in mm
- e1: thickness of polyethylene according to EN 14628-1
- ØDE: external nominal diameter of the barrel according to EN 545 and ISO 2531, in mm
- ØDI: internal nominal diameter of the socket, in mm

- P: nominal depth of the socket, in mm
- ØB: nominal diameter of the socket, in mm
- c: weld bead position, in mm
- Mass: total mass per metre (including cement coating and socket), determined with the nominal thickness, in kg/m
- Reference: commercial reference Saint-Gobain PAM
- Marking sticker can be different depending on DN

Field of use:

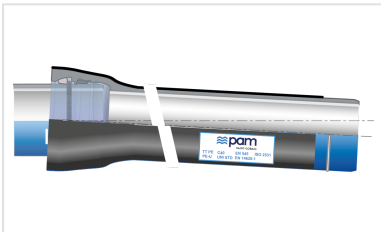
- **Soils characteristics:**
Ductile iron pipes coated with TT PE may be buried in contact with a large number of soils, normal and highly corrosive soils (low resistivity soil, mixed soils, polluted soils...), also in soils with occurrence of stray currents. Please refer to the informative annex D of EN545.
- **Water characteristics:**
Ductile iron pipelines supplied with lining sulfate resisting blast furnace cement mortar may be used to convey all types of water intended for human consumption in conformity with the Directive 98/83/EC. For other types of water, the limits of use are as given in below Table. Please refer to the informative annex E of EN545.

	Minimum value	Maximum value			
Parameter	pH	CO2 aggressive	Sulphate	Magnesium	Ammonium
Unit	-	mg/l	mg/l	mg/l	mg/l
Value	5,5	15	3000	500	30

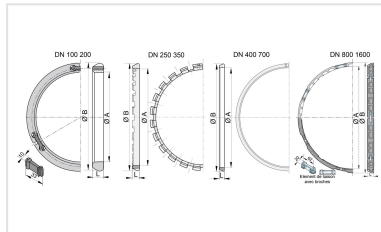
Main characteristics:

- Pressure class in conformity with Standard EN 545-2010 and ISO 2531-2009
- External coating with 2 barriers, in accordance with EN14628-1:2020 (option PE-G):
 - Back barrier: a metallic layer of ZnAl(Cu) 85/15 alloy (mini surface density 400 g/m²) applied by spraying molten metal on to the surface of the ductile iron + finishing acrylic layer (Aquacoat)
 - Front barrier: a continuous thick organic layer of extruded PE + hot melt adhesive layer applied on the back barrier, standard thickness according to DN (table 2 of EN14628-1)
- Internal coating: sulfate resisting blast furnace cement mortar
- EPDM rubber gasket suitable for contact with drinking water (ACS, KTW, WRAS,...)

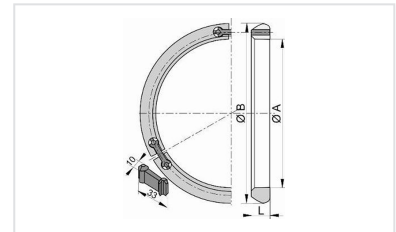
Linked products



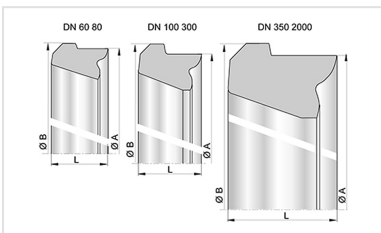
Kit Universal Standard Ve
TT PE Pipe + Universal
Standard Ve Joint



UNI STD Ve joint for Pipes
and Fittings DN80-1600



Locking Ring for UNI Ve
joint DN80-1800



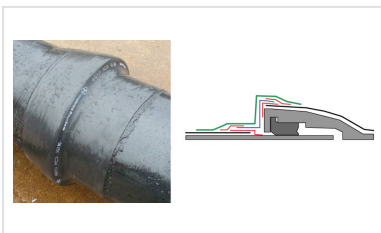
Standard gasket for Pipes
and Fittings DN60-2000



Lubricating paste -
BLUPAM



Lubricating paste -
NATURAL, INTEGRAL, and
PLUVIAL ranges



Assembly of the aluminium
sleeve on TT pipes

The information on this sketch is, to the best of our knowledge correct at the time of printing. However Saint-Gobain are constantly looking at ways of improving their products and services therefore reserve the right to change without prior notice, any of the data shown. Any orders placed will be subject to our Standard Conditions of Sale, available on request.