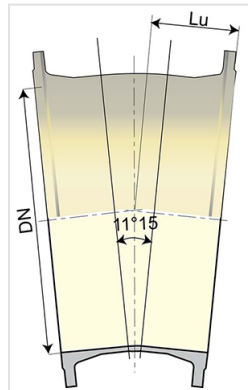


## Bend 11°15 (1/32) PUR PUX with 2 Fixed Flanges



Angle	DN (mm)	Lu (mm)	PN 16 Mass (kg)	References
11°15	1200	346	858.00	BBC12CE20UU

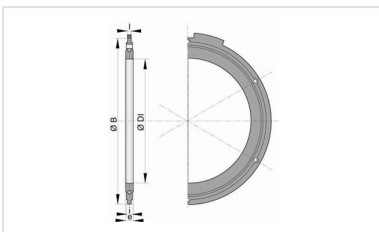
### Field of use:

- Aggressive or soft waters
- For high corrosive soils, industrial pollution zones

### Main characteristics:

- Internal-external coating : polyurethane coating in accordance with Standard EN 15655
- In conformity with EN 545:2010 and ISO 2531:2009

### Linked products



Flanged joint with hot galvanized steel bolts, nuts and washers

*The information on this sketch is, to the best of our knowledge correct at the time of printing. However Saint-Gobain are constantly looking at ways of improving their products and services therefore reserve the right to change without prior notice, any of the data shown. Any orders placed will be subject to our Standard Conditions of Sale, available on request.*