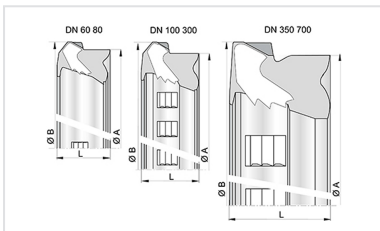


Ensemble Tuyau Standard TT PE HP + Joint Standard Vi

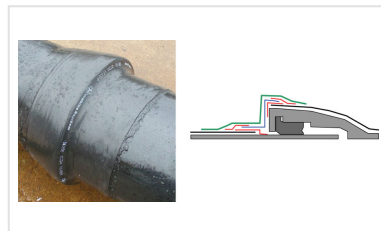


| DN | Classe | Déviation angulaire | PFA | Référence |
|-----|--------|---------------------|--------|----------------|
| 80 | C64 | 5 ° | 25 bar | SSA80C60AG-E06 |
| 100 | C64 | 5 ° | 25 bar | SSB10C60AG-E06 |
| 125 | C64 | 5 ° | 20 bar | SSB12C60AG-E06 |
| 150 | C64 | 5 ° | 25 bar | SSB15C60AG-E06 |
| 200 | C50 | 4 ° | 20 bar | SSB20D60AG-E06 |
| 250 | C50 | 4 ° | 20 bar | SSB25D60AG-E06 |
| 300 | C50 | 3 ° | 20 bar | SSB30D60AG-E06 |
| 350 | C40 | 3 ° | 20 bar | SSB35F60AG-E06 |
| 400 | C40 | 2 ° | 20 bar | SSB40F60AG-E06 |
| 450 | C40 | 2 ° | 20 bar | SSB45F60AG-E06 |
| 500 | C40 | 2 ° | 18 bar | SSB50F60AG-E06 |
| 600 | C40 | 2 ° | 16 bar | SSB60F60AG-E06 |

Produits associés



Bague de joint STD Vi pour
Tuyaux et Raccords
DN60-700



Notice de pose -
Assemblage du dispositif
anti-perméation sur tuyau
TT